

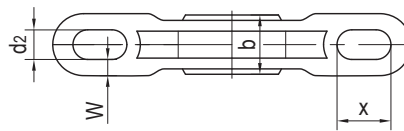
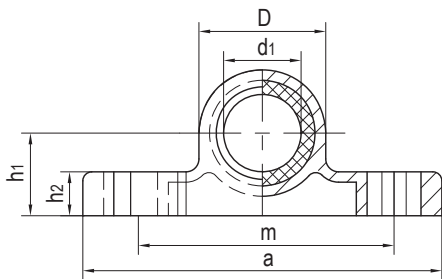
### GBB基座关节轴承 Pillow block spherical bearings



#### 产品特性 Product features

- 球体采用高耐磨材料EPB15制成
  - 保持器采用抗压和尺寸稳定性材料M163制成
  - 干运行、免维护
  - 补偿中心误差
  - 高径向载荷并能承受边缘载荷
  - 耐化学液体腐蚀
  - 重量轻、节约空间、易安装
- Spherical ball made of highly wear-resistant EPB15
  - Housing made of high strength and shape-stable M163
  - Maintenance-free, self lubricating
  - Compensation for alignment errors
  - High radial loads and compensation of edge loads
  - Chemical resistant
  - Very low weight and space saving
  - Easy installation

#### 标准规格 Standard specifications



产品编码 Part No.:

GBB-16

内径 Inner diameter

产品编码 Part No.	d <sub>1</sub> E10 [mm]	d <sub>2</sub> [mm]	h <sub>1</sub> [mm]	h <sub>2</sub> [mm]	D [mm]	b [mm]	a [mm]	m [mm]	x [mm]	w [mm]	最大静态抗拉强度 Max. axial static tensile strength		最大静态抗压 强度 Max. static compressive strength [N]	纵向孔最大 扭矩 Max. tightening torque for longitudinal holes [Nm]	重量 Weight [g]
											短期 Short-term [N]	长期 Long- term [N]			
GBB-16	16	6.6	18	10.5	SD31.7	13	86	60	12	4.2	3000	1500	1800	4.5	40
GBB-20	20	9	22	13	SD38	16	98	68	14	4.5	4700	2350	1300	10.5	54
GBB-25	25	9	27	16	SD46.7	20	124	86	17	6.5	6600	3300	1600	10.5	75.3
GBB-30	30	11	32	17	SD53.7	22	139	96	20	7	8100	4050	2100	21.5	116.8